



PAUL HUPFER

Height	1.88
Suit	48
Shoes	44
Hair	Brown
Eyes	Blue-Grey

republic™

+31 (0)20 7370 780
INFO@REPUBLICMEN.COM
WWW.REPUBLICMEN.COM



PAUL HUPFER

Height	1.88
Suit	48
Shoes	44
Hair	Brown
Eyes	Blue-Grey

republicTM

+31 (0)20 7370 780
INFO@REPUBLICMEN.COM
WWW.REPUBLICMEN.COM



PAUL HUPFER

Height	1.88
Suit	48
Shoes	44
Hair	Brown
Eyes	Blue-Grey

republic[™]

+31 (0)20 7370 780
INFO@REPUBLICMEN.COM
WWW.REPUBLICMEN.COM



PAUL HUPFER

Height	1.88
Suit	48
Shoes	44
Hair	Brown
Eyes	Blue-Grey

republic[™]

+31 (0)20 7370 780
INFO@REPUBLICMEN.COM
WWW.REPUBLICMEN.COM



PAUL HUPFER

Height	1.88
Suit	48
Shoes	44
Hair	Brown
Eyes	Blue-Grey

republic™

+31 (0)20 7370 780
INFO@REPUBLICMEN.COM
WWW.REPUBLICMEN.COM



PAUL HUPFER

Height	1.88
Suit	48
Shoes	44
Hair	Brown
Eyes	Blue-Grey

republic™

+31 (0)20 7370 780
INFO@REPUBLICMEN.COM
WWW.REPUBLICMEN.COM



PAUL HUPFER

Height	1.88
Suit	48
Shoes	44
Hair	Brown
Eyes	Blue-Grey

republic™

+31 (0)20 7370 780
INFO@REPUBLICMEN.COM
WWW.REPUBLICMEN.COM



PAUL HUPFER

Height 1.88
Suit 48
Shoes 44
Hair Brown
Eyes Blue-Grey

republic™

+31 (0)20 7370 780
INFO@REPUBLICMEN.COM
WWW.REPUBLICMEN.COM



PAUL HUPFER

Height	1.88
Suit	48
Shoes	44
Hair	Brown
Eyes	Blue-Grey

republic™

+31 (0)20 7370 780
INFO@REPUBLICMEN.COM
WWW.REPUBLICMEN.COM



PAUL HUPFER

Height	1.88
Suit	48
Shoes	44
Hair	Brown
Eyes	Blue-Grey

republic™

+31 (0)20 7370 780
INFO@REPUBLICMEN.COM
WWW.REPUBLICMEN.COM

MARCO CAPELLI

Introducing the epitome of timeless style and sartorial elegance, our brand-new Men's Autumn Winter Campaign sets the stage for a season filled with sophistication and versatility. As the leaves change and the air grows crisp, our collection embraces the spirit of the modern gentleman, fusing classic tailoring with contemporary trends. From impeccably tailored suits to luxurious knitwear and rugged outerwear, our campaign celebrates the art of dressing with poise and confidence.

Join us on a journey through the rich hues, luxurious fabrics, and refined details that define this season's menswear, where style meets substance and every outfit tells a story. Welcome to a world where fashion and functionality intertwine, and the pursuit of impeccable style begins.



PAUL HUPFER

Height	1.88
Suit	48
Shoes	44
Hair	Brown
Eyes	Blue-Grey

republic™

+31 (0)20 7370 780
INFO@REPUBLICMEN.COM
WWW.REPUBLICMEN.COM



BEST

MENS WEAR

AUTUMN WINTER '23 X BEST MENSWEAR

Introducing the epitome of timeless style and sartorial elegance, our brand-new Men's Autumn Winter Campaign sets the stage for a season filled with sophistication and versatility. As the leaves change and the air grows crisp, our collection embraces the spirit of the modern gentleman, fusing classic tailoring with contemporary trends. From impeccably tailored suits to luxurious knitwear and rugged outerwear, our campaign celebrates the art of dressing with poise and confidence.

Join us on a journey through the rich hues, luxurious fabrics, and refined details that define this season's menswear, where style meets substance and every outfit tells a story. Welcome to a world where fashion and functionality intertwine.

PAUL HUPFER

Height 1.88
Suit 48
Shoes 44
Hair Brown
Eyes Blue-Grey

republic™

+31 (0)20 7370 780
INFO@REPUBLICMEN.COM
WWW.REPUBLICMEN.COM



Wrangler

PAUL HUPFER

Height	1.88
Suit	48
Shoes	44
Hair	Brown
Eyes	Blue-Grey

republic™

+31 (0)20 7370 780
INFO@REPUBLICMEN.COM
WWW.REPUBLICMEN.COM



PAUL HUPFER

Height	1.88
Suit	48
Shoes	44
Hair	Brown
Eyes	Blue-Grey

republic™

+31 (0)20 7370 780
INFO@REPUBLICMEN.COM
WWW.REPUBLICMEN.COM



PAUL HUPFER

Height	1.88
Suit	48
Shoes	44
Hair	Brown
Eyes	Blue-Grey

republic™

+31 (0)20 7370 780
INFO@REPUBLICMEN.COM
WWW.REPUBLICMEN.COM



PAUL HUPFER

Height	1.88
Suit	48
Shoes	44
Hair	Brown
Eyes	Blue-Grey

republic[™]

+31 (0)20 7370 780
INFO@REPUBLICMEN.COM
WWW.REPUBLICMEN.COM



PAUL HUPFER

Height	1.88
Suit	48
Shoes	44
Hair	Brown
Eyes	Blue-Grey

republic[™]

+31 (0)20 7370 780
INFO@REPUBLICMEN.COM
WWW.REPUBLICMEN.COM



PAUL HUPFER

Height	1.88
Suit	48
Shoes	44
Hair	Brown
Eyes	Blue-Grey

republicTM

+31 (0)20 7370 780
INFO@REPUBLICMEN.COM
WWW.REPUBLICMEN.COM



PAUL HUPFER

Height	1.88
Suit	48
Shoes	44
Hair	Brown
Eyes	Blue-Grey

republic[™]

+31 (0)20 7370 780
INFO@REPUBLICMEN.COM
WWW.REPUBLICMEN.COM



PAUL HUPFER

Height	1.88
Suit	48
Shoes	44
Hair	Brown
Eyes	Blue-Grey

republic[™]

+31 (0)20 7370 780
INFO@REPUBLICMEN.COM
WWW.REPUBLICMEN.COM



PAUL HUPFER

Height	1.88
Suit	48
Shoes	44
Hair	Brown
Eyes	Blue-Grey

republic™

+31 (0)20 7370 780
INFO@REPUBLICMEN.COM
WWW.REPUBLICMEN.COM

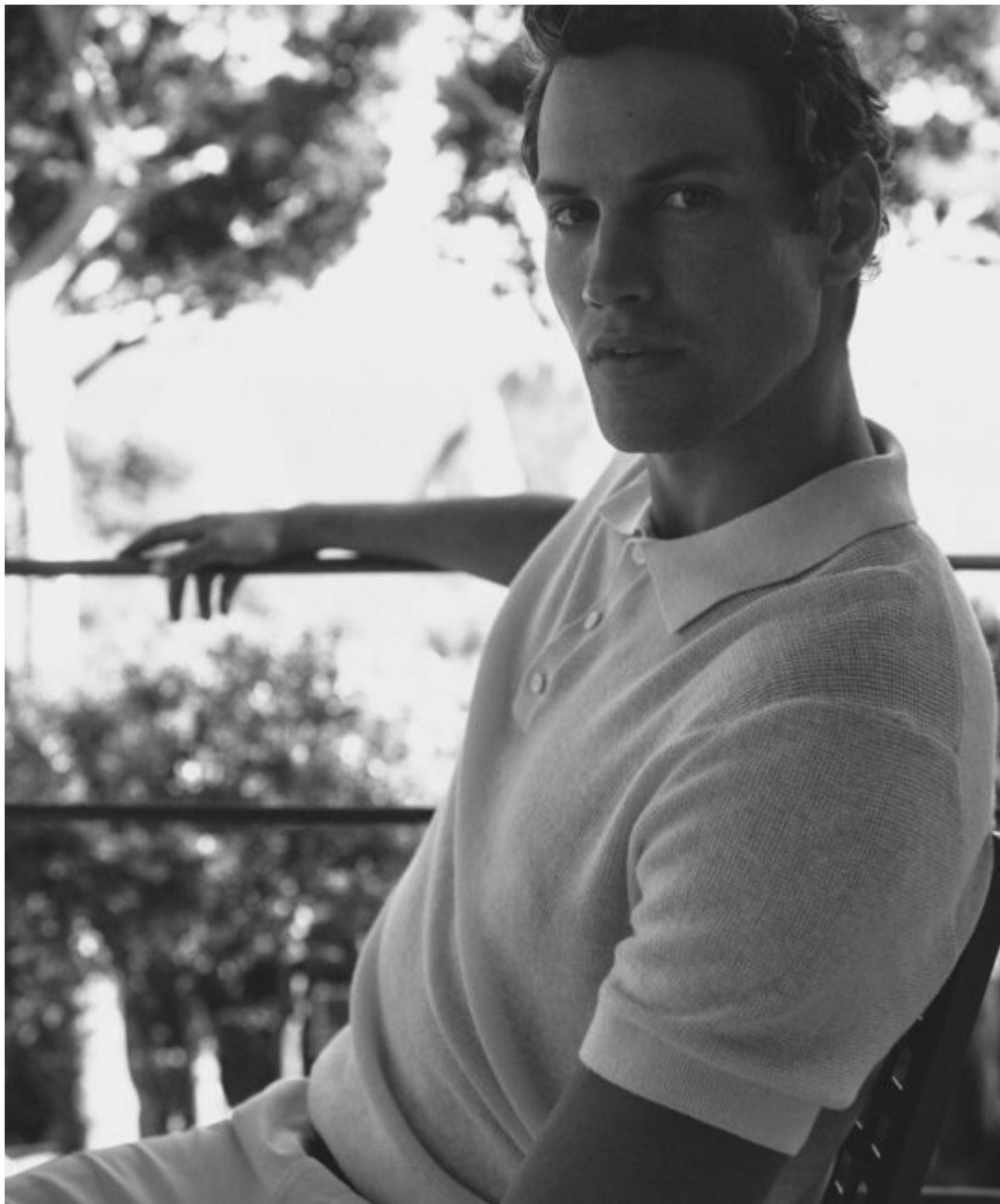


PAUL HUPFER

Height	1.88
Suit	48
Shoes	44
Hair	Brown
Eyes	Blue-Grey

republic™

+31 (0)20 7370 780
INFO@REPUBLICMEN.COM
WWW.REPUBLICMEN.COM



PAUL HUPFER

Height	1.88
Suit	48
Shoes	44
Hair	Brown
Eyes	Blue-Grey

republic™

+31 (0)20 7370 780
INFO@REPUBLICMEN.COM
WWW.REPUBLICMEN.COM



PAUL HUPFER

Height	1.88
Suit	48
Shoes	44
Hair	Brown
Eyes	Blue-Grey

republic™

+31 (0)20 7370 780
INFO@REPUBLICMEN.COM
WWW.REPUBLICMEN.COM



PAUL HUPFER

Height	1.88
Suit	48
Shoes	44
Hair	Brown
Eyes	Blue-Grey

republic™

+31 (0)20 7370 780
INFO@REPUBLICMEN.COM
WWW.REPUBLICMEN.COM



PAUL HUPFER

Height	1.88
Suit	48
Shoes	44
Hair	Brown
Eyes	Blue-Grey

republic™

+31 (0)20 7370 780
INFO@REPUBLICMEN.COM
WWW.REPUBLICMEN.COM